

Field Fusion-Splicing Connector

SC connector for drop cable



LC soft Type connector



Drop cable closure



SC connector for Patch cord



SOL-100/200

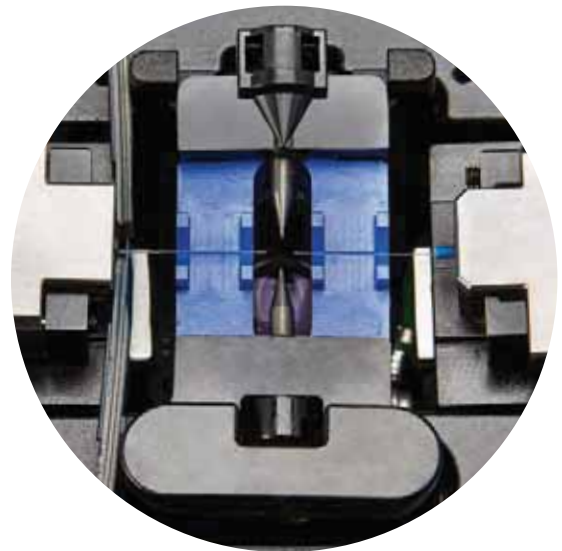
Field fusion-splicing connector

- Easy assembly
- Accurate with fusion-splicing
- Semi-permanent life time

SOL-1000

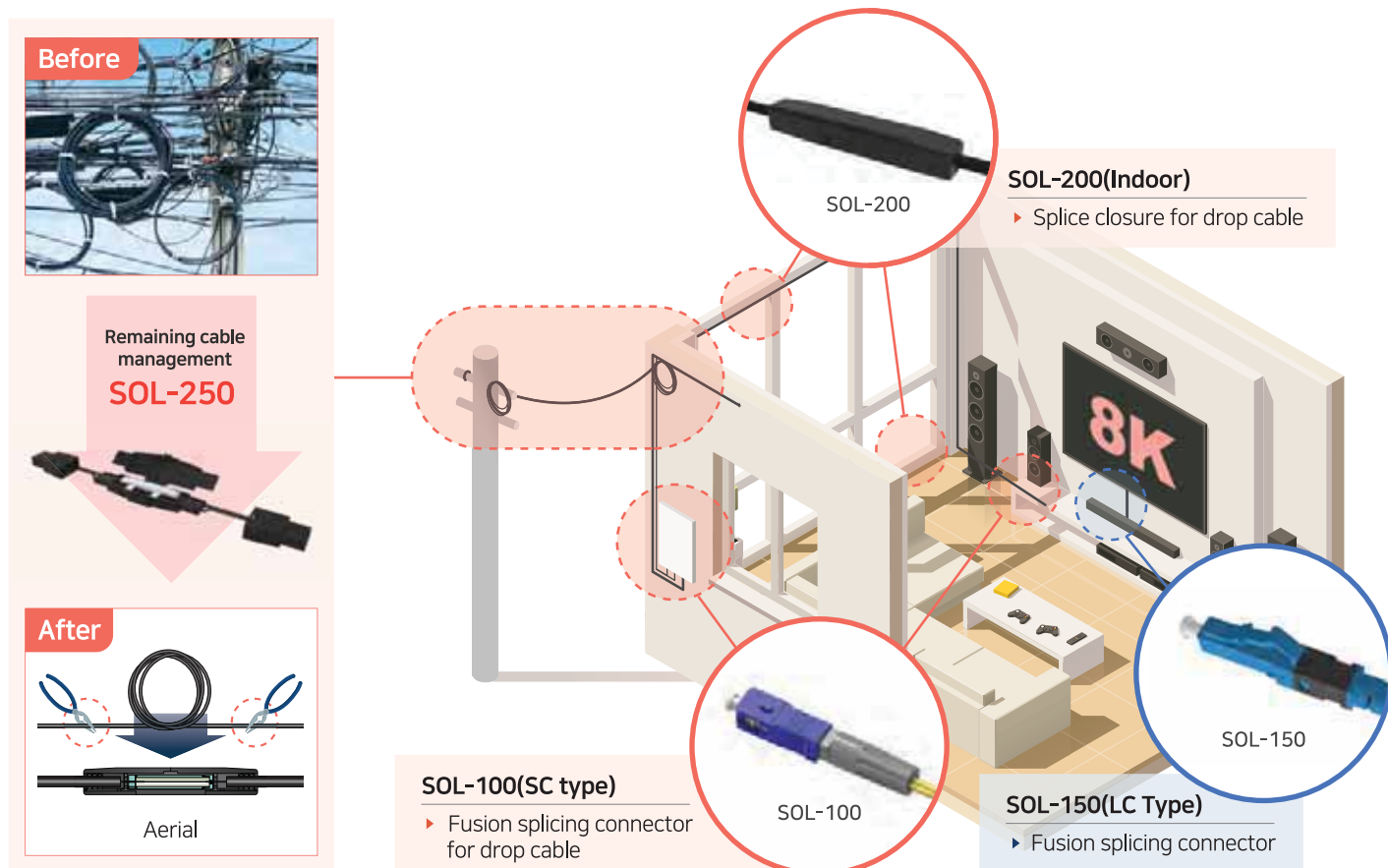
Field fusion-splicing connector maker

- Portable mini size
- No-heating sleeve process required
- Charging by 5 Micro Pin

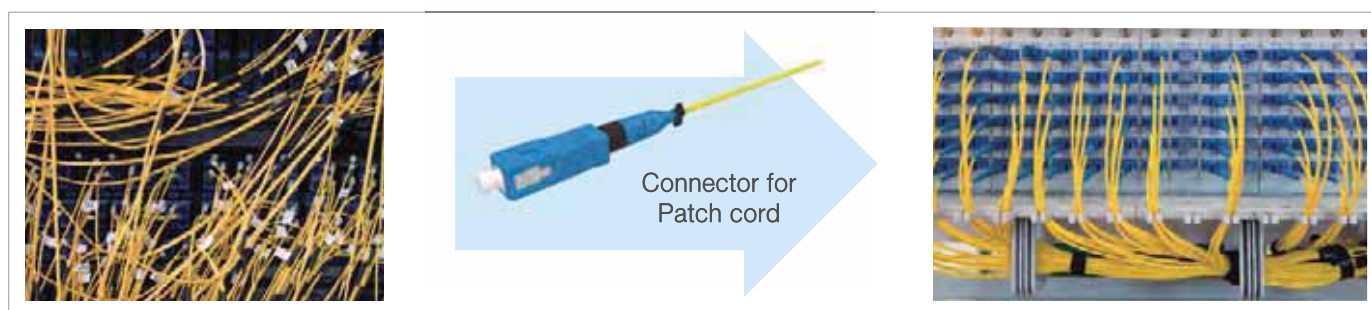


Application

I FTTX FTTP subscriber / FTTH terminal Box / Optical Drop Cable

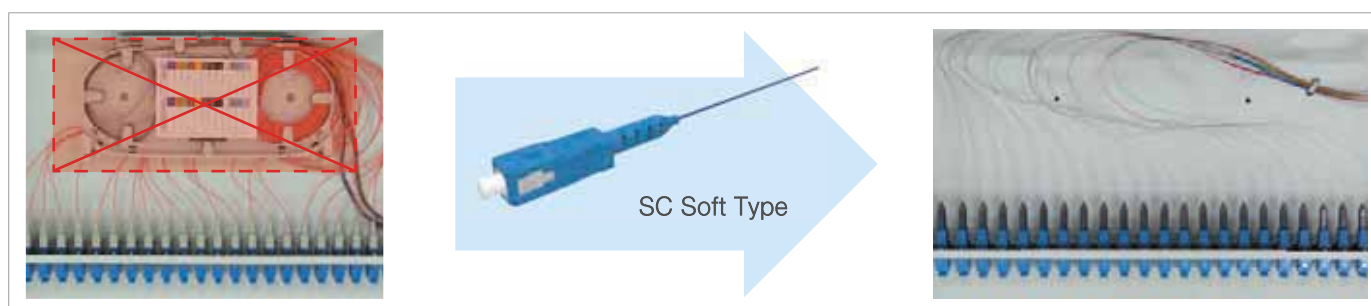


I Central office cable management



- Simple central office connector replacement and management

I FDF terminal box cable management



- Simple FDF quality improvement

I Field fusion-splicing Connectors



SC screw type



SC soft type



SC tight buffer type



LC soft type



I Specification & Solutions

Item	Specification	
Connector Type	SC / LC type	
Jacket Type	900um, 2mm, 3mm, 3mm round, 2X3mm rectangular	
Insertion Loss	< 0.1 dB	
Return Loss	> 60 dB (APC)	55 dB (UPC)
Polish	APC or UPC	
Operating Temperature	-40 ° C to 75 ° C	



Matching Gel Splicing type

- Short Life time (2~3 Years able)
- Average Splice loss 0,3dB

Optical Fusion splicing type

- Semi-permanent Life time
- Average Splice loss 0,1dB

I Assemble Process



▶ Splice

▶ Fold

▶ Assemble

▶ Complete

SOL-200 & SOL-250

I Drop Cable Closure

SOL-200
(INDOOR)



SOL-250
(OUTDOOR)



I Specification & Solutions

Item	Specification	
Connector Type	Indoor	Outdoor
Jacket Type	900um, 2mm, 3mm, 3mm round, 2X3mm rectangular	
Insertion Loss	< 0.1 dB	
Return Loss	> 60 dB	
Weight	2.7g	22g
Operating Temperature	-40 ° C to 75 ° C	
Dimension	51.8(W)X8.5(L)X7.7(H)mm 98.6(W)X26.5(L)X12.3(H)mm	
Core	Single	Dual Core

Short Cable Solution (Connecting loss)

Current Loss 0.5~1.0dB

SOL-200 No dB Loss

Long Cable Solution (Bending)

Current Loss 0.5~1.5dB

SOL-200 No dB Loss

I Assemble Process

- Splice
- Fold
- Assemble
- Complete (SOL-200)
- Insert
- Stable
- Assemble
- Complete (SOL-250)
 - Tensile force (200N)
 - IP 65

SOLmate Connector Maker

I SOL-1000

Field Fusion-Splicing 'No-Heating' Connector Maker



▶ Micro 5pin port charging

▶ Simple splicing

▶ Available to view fiber surface

▶ Quick and simple protection

I SOL-1000 Specifications

Item	Specification
Maker Type	Single Core
Applicable Fibers	Single-Mode (G.652 & G.657), Multi-Mode (G.651)
Jacket Type	900um, 2mm, 3mm, 3mm round, 2X3mm rectangular
Typical average splice loss	0.1 dB or less
Splicing Time	10 sec
Splicing cycle of battery	200 splices
Electrode life	3,000 splices
Power Supply	Installed battery by Micro 5 pin USB port (Phone charger)
Dimension / Weight	110(W) X 115(L) X 60(H) mm 0.65 Kg

SOLmate Package

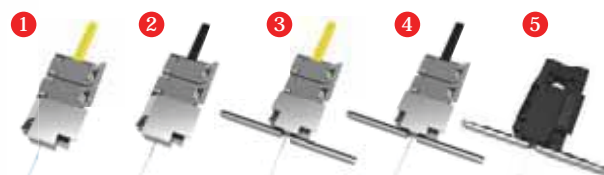
I Package

- 1 SOL-1000
- 2 Fiber Stripper
- 3 Cleaver
- 4 Case(Hard Case)
- 5 Connector Holder
- 6 Cable Holder
- 7 Sleeve Holder
- 8 Kevlar scissors



I Optional Items

Holder



- 1 SOL-FH-UNIV-R (All Round type cables)
- 2 SOL-FH-UNIV-F (All Flat type cables)
- 3 SOL-SH-UNIV-R (Round cable sleeve holder)
- 4 SOL-SH-UNIV-F (Flat cable sleeve holder)
- 5 SOL-CH (Connector holder)

I Ordering Information

Series	Part Number	Description
FTTH DROP CABLE CONNECTOR	SOL-101	SC, UPC, Screw cap, Drop Cable 3mm® & 2x3mm(F) (SM/MM)
	SOL-104	SC, APC, Screw cap, Drop Cable 3mm® & 2x3mm(F) (SM/MM)
	SOL-113	SC, UPC, Soft, Tight Buffer, Drop Cable 900µm® (SM/MM)
	SOL-116	SC, APC, Soft, Tight Buffer, Drop Cable 900µm® (SM/MM)
PATCH CORD CONNTECTOR	SOL-132	SC, UPC, Soft, Patch 2mm® (SM/MM)
	SOL-133	SC, UPC, Soft, Tight Buffer 900µm (SM/MM)
	SOL-135	SC, APC, Soft, Patch 2mm® (SM/MM)
	SOL-136	SC, APC, Soft, Tight Buffer 900µm (SM/MM)
	SOL-142	LC, UPC, Soft, Patch 2mm® (SM/MM)
	SOL-143	LC, UPC, Soft, Tight Buffer 900µm (SM/MM)
	SOL-145	LC, APC, Soft, Patch 2mm® (SM/MM)
	SOL-146	LC, APC, Soft, Tight Buffer 900µm (SM/MM)
Series	Part Number	Description
SPLICE CLOSURE	SOL-200	Indoor Drop Cable & Patch
	SOL-250	Outdoor Drop Cable & Patch



www.solmate.net

